

# COTTAGE COLLECTION

## Standard Features and Finish Packages



# Woodlands Cottage Collection

### *Cottage Characteristics*

- Mountain rustic architecture
- Bonus family room/game room space in terrace level floor plans
- Master bedroom located on the main living level
- Master walk-in closet
- Stained siding in a choice of colors
- Exterior stone features
- Large covered outdoor living space
- Outdoor fireplace
- Architectural asphalt shingle roofing
- Exterior lighting package
- Landscaping
- Windows (metal clad wood windows)

### *Upgrade Packages are Available and Include:*

- Outdoor kitchen, (grill/cabinets/ice maker sink/ beverage center)
- Additional exterior stone packages
- Hot tube connections
- Lower level bathroom tile (shower surround) fiberglass standard
- Washer/Dryer options
- Appliances
- Hardwoods throughout downstairs
- Hardwood floors in master bedroom
- Single or double car garages or double with carriage house design
- Tongue and groove wood ceiling in great room (drywall with beam accents standard)
- Alarm package
- Propane fired generator
- Built in vacuum
- Window coverings
- Interior design services
- Furniture packages
- Designer closet upgrades
- Cedar shake roof

### *Bathroom Features*

- Oversized tiled shower with glass enclosure in the master bath
- Granite master bath vanity tops
- Linen cabinets
- Designer faucets
- Mirrors

### *Kitchen Features*

- Granite countertops with stainless steel sink
- Designer faucet
- G.E Profile appliance package includes refrigerator, range, microwave and multi-cycle dishwasher
- Wood cabinets in a choice of styles, wood and finishes
- Pantry area

### *Interior Features*

- Hardwood flooring in great room and kitchen
- Vaulted ceilings
- Tile in bathrooms and foyer
- Wood or gas fireplace with stone surround with mantle, great room and deck
- Decorator lighting package
- Decorator door hardware
- Wood beams and custom detailing throughout
- Dual fuel heating systems
- Designer case and base throughout
- 3 bedrooms with the master bedroom suite and walk-in closet on the main level
- 3.5 baths
- Laundry on the main level
- Wired for phone, cable and fans

**10 Autumn Sky Drive  
Hendersonville, North Carolina 28792  
(828) 233.1017  
[www.GrandHighlands.com](http://www.GrandHighlands.com)**



### Authentic materials. Open floorplans and wondrous views.

The architectural style for Grand Highlands is inspired by the timeless high country estates of the Blue Ridge Mountains. Luxurious yet inviting, these high country family getaways elevate the sense of what a mountain retreat should be. Like the majestic mountain estates that inspired it, Grand Highlands' homes and club properties are distinguished by rustic yet dignified mountain architecture. A signature high country style that mixes stone, shingles and timbers.

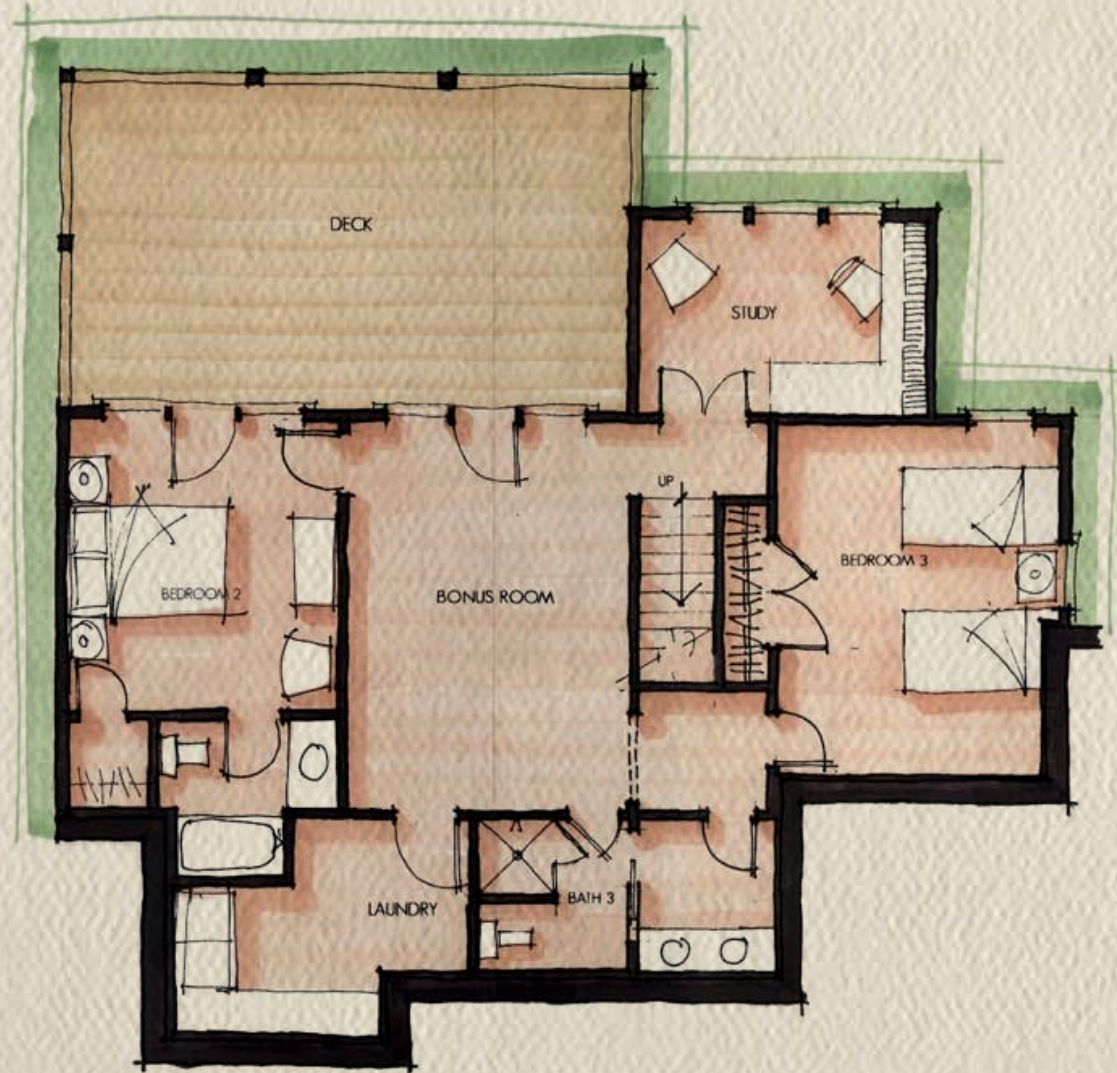
The cool air. The incredible views. The open fields that surround the property. The families who select a cottage home will want to spend as much time outdoors as possible. That's why every floorplan has been designed around maximizing views and offers expansive outdoor living areas in order to bring the outside in. From outdoor fireplaces and kitchens to very livable, high-end finishes this collection redefines cottage living.





# DOGWOOD | 2300 total sf. • 3 bedroom/3.5 bath

Modern luxury meets traditional mountain style in the Woodlands Cottage Collection. Tucked away in wooded lots teeming with beautiful plant and wildlife, this romantic collection enjoys a close vicinity to a beautiful forest trail and a community park. The Woodlands are especially designed by Wayland Shamburger to be low-maintenance retreats to high-end cottages, creating the ideal environment for rustic relaxation.



Lower Level / 1,100 sf.



Main Level / 1,200 sf.